

# Interior Sun Control Fabrics

SheerWeave

INTEGRATED FABRIC

INFINITY

Sustainable Window Treatment Fabric

 **EcoGreen**  
Solar Shades, LLC.

(3% open)



PG2 Almond

(5% open)

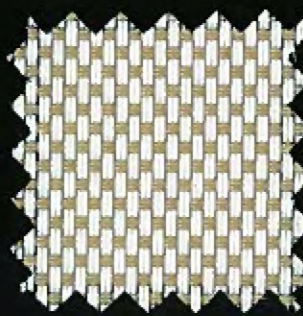


PG2 Almond

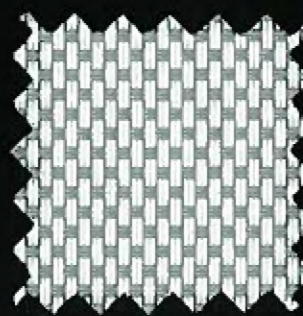
THE ABOVE OPENNESS OPTIONS ARE ALSO AVAILABLE IN THE COLORS SHOWN BELOW.



PG1 Cotton



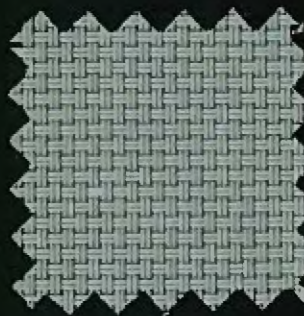
PG3 Wheat



PG4 Stone



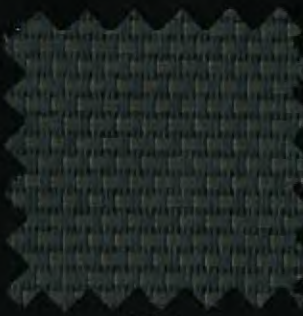
OG1 Barley



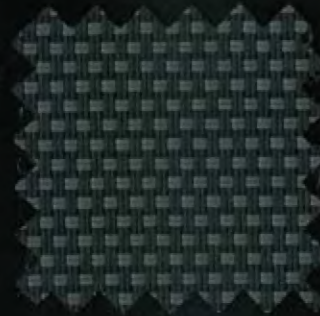
VG1 Nickel



VG2 Midnight



VG3 Bark



VG4 Slate



## Specifications

■ SheerWeave Infinity™ sustainable window treatment fabric is an eco-friendly full basketweave. Emulating the look and engineering of standard SheerWeave® fabrics, Infinity's core yarn and coating are PVC-free, lead-free and 100% recyclable.

**Fire Classification:** ASTM E-84 (Class I), NFPA 701-2004 TM#1 (small scale), NFPA 101 (Class A Rating) and CAN/ULC-S109-03 Large

**Bacteria and Fungal Resistance:** ASTM E 2180 and ASTM G 22

**Environmental Certification:** GREENGUARD Certified and GREENGUARD for Children and Schools Certified

**Lead Free:** RoHS / Directive 2002/95/EC, US Consumer Product Safety Commission Section 101, ANSI/WCMA A100.1-2007 for lead content and REACH (EC 1907/2006) compliant

**Standard Uses:** Roll-up shades, panel tracks and screens

**Warranty:** 5-year interior



## 3% Openness

**Standard Widths:** 63" and 98"

(160.0cm, 213.4cm and 248.9cm)

**Standard Roll Length:** 30 Linear Yards (27.4m)

**Composition:** 100% TPO (Thermoplastic Olefin),  
30% TPO fiber yarn/70% TPO coating on TPO yarn

**Mesh Weight:** 18.0 oz/yd<sup>2</sup> (610 g/m<sup>2</sup>)

**Fabric Thickness:** .043 in (1.09mm)

**Openness Factor:** Approximately 3%

**UV Blockage:** Approximately 97%

Solar Heat Control Properties of  
Phifer SheerWeave Infinity 3% Openness  
Fabrics Installed Internally, Zero-Degree Profile Angle

Style No.	Color	*Solar Optical Properties				Shading Coefficient w/					
		TS	RS	AS	TV	Single		Insulating			
						1/8CL	1/4CL	1/4HA	1/2CL	1CL	1HA
PG1	Cotton	19	67	14	18	0.33	0.34	0.32	0.31	0.32	0.25
PG2	Almond	16	60	24	13	0.38	0.37	0.34	0.35	0.35	0.27
PG3	Wheat	11	52	37	9	0.42	0.41	0.38	0.40	0.39	0.29
PG4	Stone	11	53	38	8	0.41	0.41	0.36	0.39	0.38	0.29
QG1	Barley	13	52	35	10	0.43	0.42	0.36	0.40	0.39	0.29
VG1	Nickel	11	33	56	11	0.55	0.53	0.42	0.52	0.49	0.35
VG2	Midnight	1	5	94	2	0.72	0.68	0.50	0.68	0.62	0.42
VG3	Bark	1	6	93	2	0.71	0.68	0.50	0.68	0.61	0.42
VG4	Slate	2	9	89	3	0.70	0.68	0.49	0.66	0.60	0.41

## 5% Openness

**Standard Widths:** 63" and 98"

(160.0cm, 213.4cm and 248.9cm)

**Standard Roll Length:** 30 Linear Yards (27.4m)

**Composition:** 100% TPO (Thermoplastic Olefin),  
30% TPO fiber yarn/70% TPO coating on TPO yarn

**Mesh Weight:** 15.3 oz/yd<sup>2</sup> (519 g/m<sup>2</sup>)

**Fabric Thickness:** .043 in (1.09mm)

**Openness Factor:** Approximately 5%

**UV Blockage:** Approximately 95%

Solar Heat Control Properties of  
Phifer SheerWeave Infinity 5% Openness  
Fabrics Installed Internally, Zero-Degree Profile Angle

Style No.	Color	*Solar Optical Properties				Shading Coefficient w/					
		TS	RS	AS	TV	Single		Insulating			
						1/8CL	1/4CL	1/4HA	1/2CL	1CL	1HA
PG1	Cotton	28	83	11	23	0.38	0.38	0.34	0.35	0.35	0.27
PG2	Almond	22	58	20	20	0.41	0.40	0.35	0.38	0.37	0.28
PG3	Wheat	15	55	30	14	0.41	0.40	0.35	0.38	0.38	0.29
PG4	Stone	18	53	31	16	0.43	0.42	0.38	0.40	0.39	0.29
QG1	Barley	18	51	31	15	0.45	0.44	0.37	0.42	0.40	0.30
VG1	Nickel	7	35	58	8	0.53	0.51	0.41	0.50	0.47	0.34
VG2	Midnight	3	8	91	4	0.72	0.68	0.50	0.68	0.62	0.42
VG3	Bark	3	5	92	5	0.72	0.69	0.50	0.69	0.62	0.42
VG4	Slate	4	8	86	5	0.71	0.67	0.50	0.67	0.61	0.42

\* Performance evaluations conducted by Matrix, Inc., Mesa, Arizona.

TS = Solar Transmittance      1/8 CL = 1/8" Clear Glass  
RS = Solar Reflectance      1/4 CL = 1/4" Clear Glass  
AS = Solar Absorbance      1/4HA = 1/4" Heat Absorbing Glass  
TV = Visual Transmittance

The solar optical properties are used to calculate the shading coefficient. The shading coefficient represents the percentage of solar heat gain that is transmitted to the interior through the glass and shading system. Darker colors provide maximum glare reduction and visibility. For complete technical information, current test results, performance specifications and larger samples, contact our Sun Control Marketing Department.



**EcoGreen**  
Solar Shades, LLC.

Ken Herman, President  
Ken@EcoGreenSolarShades.com  
EcoGreen Solar Shades, LLC  
7603 First Place B7  
Oakwood Village, OH 44146  
Phone: 440-232-1551  
Fax: 440-232-1122  
Toll Free: 877-610-1555