



Microban® antimicrobial protection inhibits the growth of stain-causing bacteria, mold and mildew on the shade. MICROBAN is a registered trademark of Microban Products Company.



EcoGreen
Solar Shades, LLC.

SheerWeave
BRAIDED FABRIC

STYLE 2701/2703/2705/2710

Interior Sun Control Fabrics

Style 2701

(1% open)



P28 Oyster/Charcoal

Style 2703

(3% open)



P28 Oyster/Charcoal

Style 2705

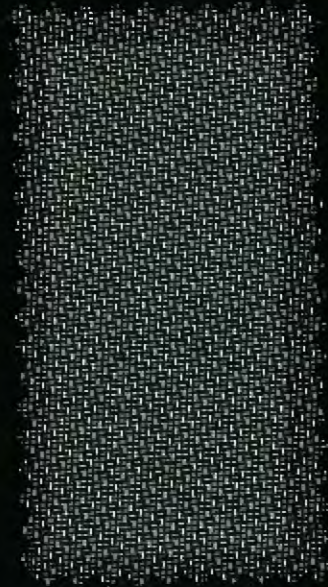
(5% open)



P28 Oyster/Charcoal

Style 2710

(10% open)



P28 Oyster/Charcoal

Note: Color may appear different based on openness factor.

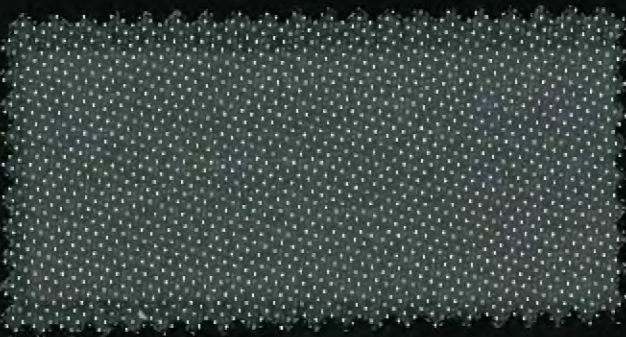
THE ABOVE STYLES ARE ALSO AVAILABLE IN THE COLORS SHOWN BELOW.



P12 Oyster



P13 Oyster/Beige



P91 Oyster/Pewter



P92 Oyster/Chestnut

SheerWeave® Style 2701/2703/2705/2710

Specifications

■ Styles 2701, 2703, 2705 and 2710 are woven from a unique twill pattern that displaces the individual yarns to create a two-sided fabric for maximum performance in heat reduction, glare reduction and improved visibility.

Fire Classification: California U.S. Title 19 (small scale), NFPA 701-2004 TM#1 (small scale), NFPA 101 (Class A Rating), UBC (Class I), British Standard 5867 and NFPA 701 TM#2 Large Scale

Bacteria and Fungal Resistance: ASTM E 2180

Indoor Air Quality: GREENGUARD Certified and GREENGUARD for Children and Schools Certified



Style 2701

Standard Colors: Oyster, Oyster/Beige, Oyster/Charcoal, Oyster/Pewter and Oyster/Chestnut

Standard Widths: 63" and 98" (160.0cm and 248.9cm)

Standard Roll Length: 30 Linear Yards (27.4m)

Composition: 36% Fiberglass, 64% Vinyl on Fiberglass

Mesh Weight: 14.6 oz/yd² (495 g/m²)

Fabric Thickness: .027 in (0.66mm)

Openness Factor: Approximately 1%

UV Blockage: Approximately 99%

Breaking Strength (lb): 264 Warp, 377 Fill

Stiffness (mg): 260 Warp, 325 Fill

Style 2703

Standard Colors: Oyster, Oyster/Beige, Oyster/Charcoal, Oyster/Pewter and Oyster/Chestnut

Standard Widths: 63" and 98" (160.0cm and 248.9cm)

Standard Roll Length: 30 Linear Yards (27.4m)

Composition: 36% Fiberglass, 64% Vinyl on Fiberglass

Mesh Weight: 14.0 oz/yd² (475 g/m²)

Fabric Thickness: .028 in (0.71mm)

Openness Factor: Approximately 3%

UV Blockage: Approximately 97%

Breaking Strength (lb): 247 Warp, 312 Fill

Stiffness (mg): 260 Warp, 247 Fill

Style 2705

Standard Colors: Oyster, Oyster/Beige, Oyster/Charcoal, Oyster/Pewter and Oyster/Chestnut

Standard Widths: 63" and 98" (160.0cm and 248.9cm)

Standard Roll Length: 30 Linear Yards (27.4m)

Composition: 34% Fiberglass, 66% Vinyl on Fiberglass

Mesh Weight: 11.8 oz/yd² (379 g/m²)

Fabric Thickness: .025 in (0.64mm)

Openness Factor: Approximately 5%

UV Blockage: Approximately 95%

Breaking Strength (lb): 279 Warp, 240 Fill

Stiffness (mg): 280 Warp, 270 Fill

Style 2710

Standard Colors: Oyster, Oyster/Beige, Oyster/Charcoal, Oyster/Pewter and Oyster/Chestnut

Standard Widths: 63" and 98" (160.0cm and 248.9cm)

Standard Roll Length: 30 Linear Yards (27.4m)

Composition: 34% Fiberglass, 66% Vinyl on Fiberglass

Mesh Weight: 10.4 oz/yd² (353 g/m²)

Fabric Thickness: .025 in (0.64mm)

Openness Factor: Approximately 10%

UV Blockage: Approximately 90%

Breaking Strength (lb): 283 Warp, 220 Fill

Stiffness (mg): 418 Warp, 257 Fill

Solar Heat Control Properties of Phifer SheerWeave Style 2701 Fabrics Installed Internally, Zero-Degree Profile Angle

| Style No. | Color | *Solar Optical Properties | | | | Shading Coefficient w/ | | | | | | |
|-----------|-----------------|---------------------------|-------|-------|-------|------------------------|------|------|------------|------|------|--|
| | | TS | RS | AS | TV | Single | | | Insulating | | | |
| | | 1/8CL | 1/4CL | 1/4HA | 1/2CL | 1CL | 1HA | | | | | |
| P12 | Oyster | 21 | 64 | 15 | 17 | 0.36 | 0.36 | 0.33 | 0.34 | 0.34 | 0.26 | |
| P13 | Oyster/Beige | 15 | 57 | 28 | 12 | 0.38 | 0.38 | 0.34 | 0.36 | 0.35 | 0.27 | |
| P28 | Oyster/Charcoal | 5 | 39 | 56 | 8 | 0.49 | 0.47 | 0.39 | 0.46 | 0.44 | 0.32 | |
| P91 | Oyster/Pewter | 6 | 43 | 51 | 8 | 0.46 | 0.45 | 0.37 | 0.45 | 0.42 | 0.30 | |
| P92 | Oyster/Chestnut | 8 | 41 | 53 | 8 | 0.47 | 0.45 | 0.38 | 0.45 | 0.44 | 0.32 | |

Solar Heat Control Properties of Phifer SheerWeave Style 2703 Fabrics Installed Internally, Zero-Degree Profile Angle

| Style No. | Color | *Solar Optical Properties | | | | Shading Coefficient w/ | | | | | | |
|-----------|-----------------|---------------------------|-------|-------|-------|------------------------|------|------|------------|------|------|--|
| | | TS | RS | AS | TV | Single | | | Insulating | | | |
| | | 1/8CL | 1/4CL | 1/4HA | 1/2CL | 1CL | 1HA | | | | | |
| P12 | Oyster | 22 | 62 | 16 | 19 | 0.38 | 0.37 | 0.34 | 0.35 | 0.35 | 0.27 | |
| P13 | Oyster/Beige | 15 | 58 | 27 | 13 | 0.39 | 0.38 | 0.34 | 0.37 | 0.36 | 0.28 | |
| P28 | Oyster/Charcoal | 7 | 40 | 53 | 8 | 0.60 | 0.48 | 0.39 | 0.47 | 0.44 | 0.32 | |
| P91 | Oyster/Pewter | 8 | 44 | 48 | 9 | 0.47 | 0.46 | 0.38 | 0.45 | 0.42 | 0.31 | |
| P92 | Oyster/Chestnut | 7 | 42 | 51 | 8 | 0.48 | 0.47 | 0.39 | 0.46 | 0.43 | 0.32 | |

Solar Heat Control Properties of Phifer SheerWeave Style 2705 Fabrics Installed Internally, Zero-Degree Profile Angle

| Style No. | Color | *Solar Optical Properties | | | | Shading Coefficient w/ | | | | | | |
|-----------|-----------------|---------------------------|-------|-------|-------|------------------------|------|------|------------|------|------|--|
| | | TS | RS | AS | TV | Single | | | Insulating | | | |
| | | 1/8CL | 1/4CL | 1/4HA | 1/2CL | 1CL | 1HA | | | | | |
| P12 | Oyster | 22 | 62 | 16 | 20 | 0.38 | 0.37 | 0.34 | 0.35 | 0.35 | 0.27 | |
| P13 | Oyster/Beige | 23 | 54 | 23 | 21 | 0.44 | 0.43 | 0.37 | 0.41 | 0.39 | 0.30 | |
| P28 | Oyster/Charcoal | 12 | 40 | 48 | 14 | 0.51 | 0.49 | 0.40 | 0.48 | 0.45 | 0.33 | |
| P91 | Oyster/Pewter | 11 | 46 | 43 | 12 | 0.46 | 0.45 | 0.38 | 0.44 | 0.42 | 0.31 | |
| P92 | Oyster/Chestnut | 12 | 43 | 46 | 13 | 0.49 | 0.47 | 0.39 | 0.46 | 0.44 | 0.32 | |

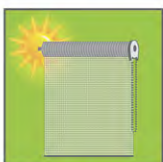
Solar Heat Control Properties of Phifer SheerWeave Style 2710 Fabrics Installed Internally, Zero-Degree Profile Angle

| Style No. | Color | *Solar Optical Properties | | | | Shading Coefficient w/ | | | | | | |
|-----------|-----------------|---------------------------|-------|-------|-------|------------------------|------|------|------------|------|------|--|
| | | TS | RS | AS | TV | Single | | | Insulating | | | |
| | | 1/8CL | 1/4CL | 1/4HA | 1/2CL | 1CL | 1HA | | | | | |
| P12 | Oyster | 34 | 64 | 12 | 32 | 0.46 | 0.45 | 0.38 | 0.43 | 0.41 | 0.31 | |
| P13 | Oyster/Beige | 29 | 51 | 20 | 28 | 0.47 | 0.46 | 0.39 | 0.44 | 0.42 | 0.31 | |
| P28 | Oyster/Charcoal | 21 | 37 | 42 | 24 | 0.55 | 0.53 | 0.42 | 0.52 | 0.48 | 0.35 | |
| P91 | Oyster/Pewter | 24 | 43 | 33 | 25 | 0.52 | 0.50 | 0.41 | 0.48 | 0.45 | 0.33 | |
| P92 | Oyster/Chestnut | 25 | 41 | 34 | 28 | 0.53 | 0.52 | 0.42 | 0.50 | 0.47 | 0.34 | |

* Performance evaluations conducted by Matrix, Inc., Mesa, Arizona.

TS = Solar Transmittance 1/8 CL = 1/8" Clear Glass 1/2 CL = 1/2" Clear Glass
 RS = Solar Reflectance 1/4 CL = 1/4" Clear Glass 1 CL = 1" Clear Glass
 AS = Solar Absorption 1/4HA = 1/4" Heat Absorbing Glass
 TV = Visual Transmittance

The solar optical properties are used to calculate the shading coefficient. The shading coefficient represents the percentage of solar heat gain that is transmitted to the interior through the glass and shading system. Darker colors provide maximum glare reduction and visibility. For complete technical information, current test results, performance specifications and larger samples, contact our Sun Control Marketing Department.



EcoGreen
Solar Shades, LLC.

Ken Herman, President
Ken@EcoGreenSolarShades.com
EcoGreen Solar Shades, LLC
7603 First Place B7
Oakwood Village, OH 44146
Phone: 440-232-1551
Fax: 440-232-1122
Toll Free: 877-610-1555